



October 19, 2017

<p>SUBJECT</p> <p>FIRST 5 IMPACT IMPLEMENTATION AND EVALUATION UPDATE</p> <p>Strategic Priority Area 1. Children and Families: Support children prenatal through age 5 and their families by providing culturally and linguistically effective resources, knowledge, and opportunities for them to develop the skills needed to achieve their optimal potential in school and life.</p> <p>Goal 1.2. Early Learning: Children birth through age 5 benefit from high quality early education, early intervention, family engagement, and support that prepares all children to reach their optimal potential in school and life.</p>	<p><input type="checkbox"/> Action</p> <p><input checked="" type="checkbox"/> Information</p>
---	---

SUMMARY OF THE ISSUE

This agenda item describes key implementation and evaluation activities for First 5 IMPACT (Improve and Maximize Programs so All Children Thrive).

RECOMMENDATION

This is an information-only item. First 5 California (F5CA) staff is not requesting action at this time.

BACKGROUND OF KEY ISSUES

First 5 IMPACT includes participation of 58 counties organized within 48 consortia and 10 Hub regions.

Staff will summarize progress of First 5 IMPACT’s implementation and evaluation in the attached presentation.

Additional information is available on the First 5 IMPACT webpage at http://www.cfc.ca.gov/programs/programs_impact.html.

SUMMARY OF PREVIOUS COMMISSION DISCUSSION AND ACTION

Commissioners approved \$190 million in support of First 5 IMPACT at the April 23, 2015, Commission meeting. On July 2, 2015, F5CA released the First 5 IMPACT Request for Application for eligible county-level partners. Staff provided an update on the status of First 5 IMPACT at the July 23, 2015, Commission meeting.

ATTACHMENTS

A. First 5 IMPACT Implementation and Evaluation Update PowerPoint Presentation

First 5 IMPACT Implementation and Evaluation Update

October 19, 2017

**First 5 California
Commission Meeting**



What is a Quality Rating and Improvement System (QRIS)?

- Quality *standards*
- A process for supporting *quality improvement*
- Provision of *incentives*
- A process for *monitoring* standards
- Dissemination of *information* to parents and the public about program quality

First 5 IMPACT

\$190 Million +
\$41,980,184 in
match to date

First 5 IMPACT funding is allocated to support a network of local quality improvement systems (Consortia) to better coordinate, assess, and improve the quality of early learning settings across California

**What is the
purpose of
First 5 IMPACT?**

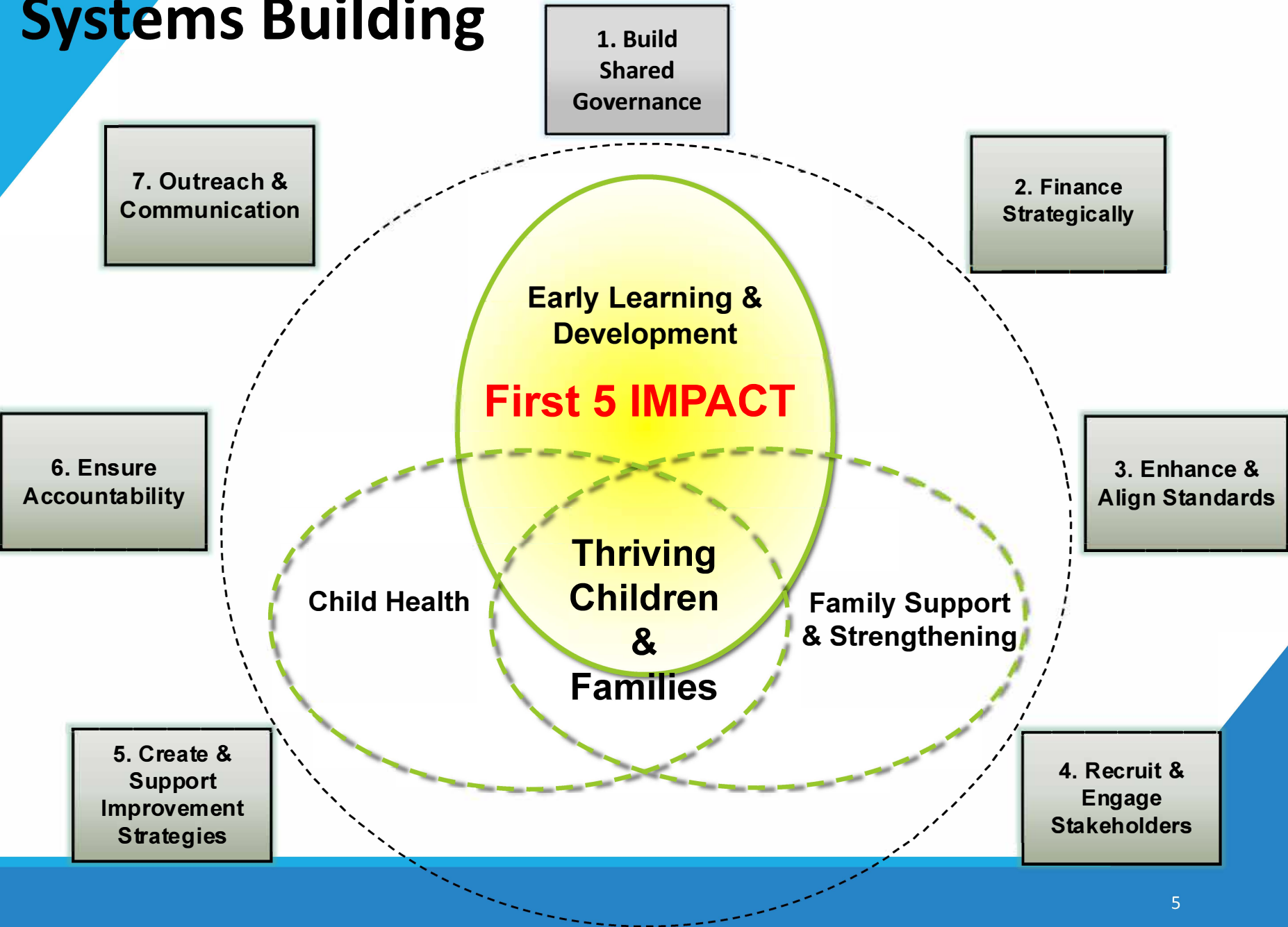
First 5 IMPACT

Improve and Maximize Programs so All Children Thrive

Overview

- \$190 million over 5 years (FY 2015–20)
- Supports quality improvement across all early learning setting types, including alternative and family, friend, and neighbor (FFN)
- Aligns with and maximizes federal and state investments, leveraging local, state, and federal non-First 5 dollars
- Creates a shared focus on a common desired result: **thriving children and families**

Systems Building



First 5 IMPACT

Improve and Maximize Programs so All Children Thrive

- All 58 counties are participating
- 48 lead agencies (5 multi-county regions)
- 32 consortia implementing QRIS for a majority of sites
- 16 consortia implementing quality improvement systems (QIS)
- 4601 sites targeted

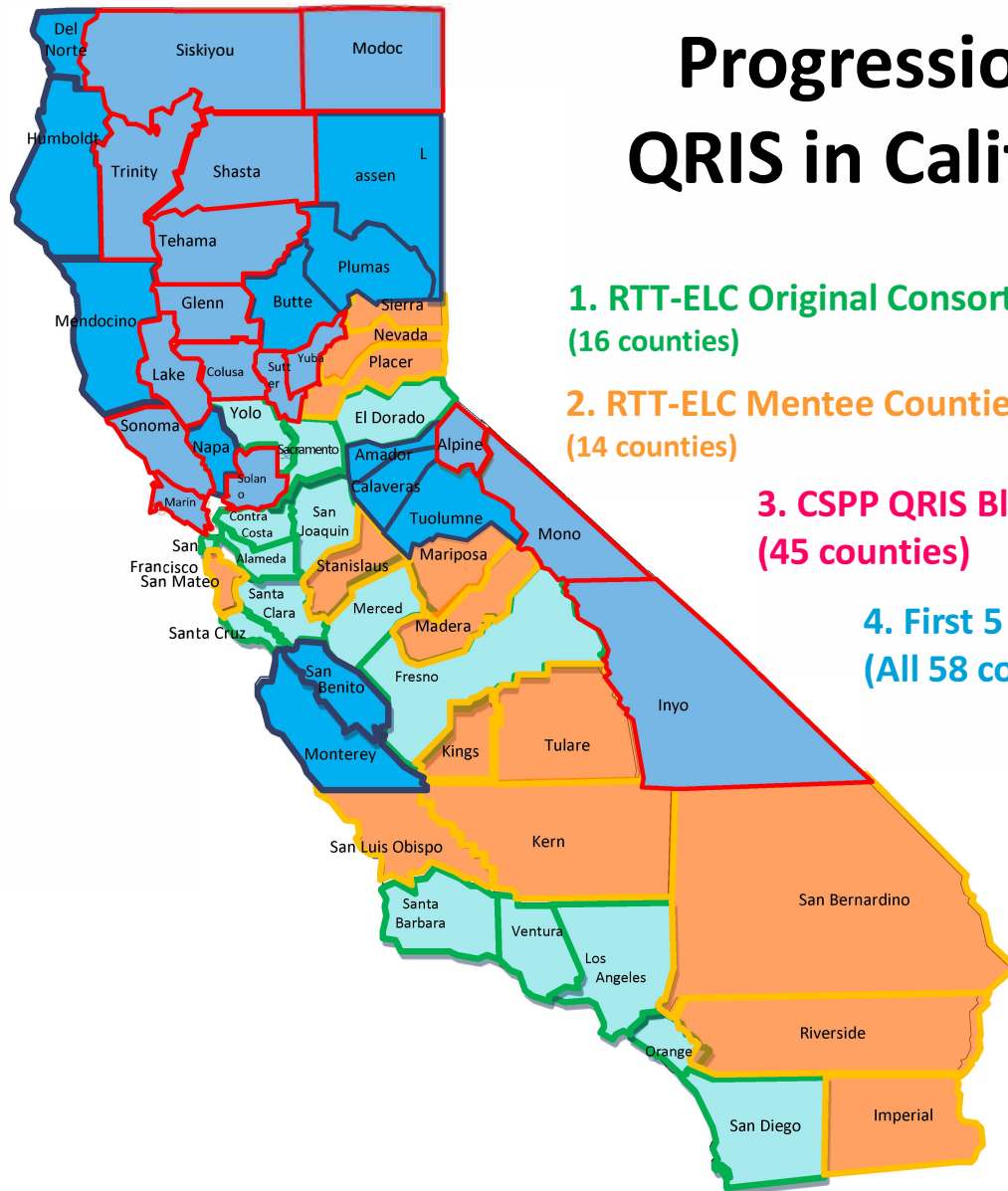
First 5 IMPACT

Alignment with Other Programs

First 5 IMPACT leverages other initiatives and funding sources to expand efforts and reach more diverse settings. Those initiatives include:

- California Department of Education (CDE) California State Preschool Program (CSPP) QRIS Block Grant
- Infant/Toddler QRIS Block Grant (CDE)
- Race to the Top-Early Learning Challenge (Federal grant to CDE)
- Child Care and Development Block Grant Quality Improvement investments (e.g., CDE Quality Projects)
- Local quality projects

Progression of QRIS in California



1. RTT-ELC Original Consortia (2011)
(16 counties)

2. RTT-ELC Mentee Counties (2013)
(14 counties)

3. CSPP QRIS Block Grant (2015)
(45 counties)

4. First 5 IMPACT (2015)
(All 58 counties)

First 5 IMPACT

Improve and Maximize Programs so All Children Thrive

Key Focus Areas

1. \$122 million for county Lead Agencies to support local QRIS and improving the quality of early learning sites across setting-types, including licensed and legally license-exempt care
2. \$18 million for First 5 county commissions to support regional coordination of local quality improvement training and technical assistance
3. \$28 million for state-level support of quality improvement statewide training and technical assistance (T&TA)
4. \$22 million for evaluation and research on the First 5 IMPACT approach, including providing consortia with support to expand local QRIS databases

First 5 IMPACT

Improve and Maximize Programs so All Children Thrive

What types of sites can participate?

Early learning settings (sites) eligible to participate in First 5 IMPACT and may include the following:

- Licensed centers
- Licensed family child care homes (FCCH)
- License-exempt providers, such as centers and FFN
- Alternative settings, including unlicensed community and home-based settings that provide early learning and school readiness services to parents and young children

Regional Coordination and T&TA Hubs

- 10 regions statewide
- Coordinate assessor management, training, and technical assistance
- Support capacity of consortia in the region



Note: Regions adopted from the First 5 IMPACT Regional Coordination and Training and Technical Assistance Hub Regions

First 5 IMPACT

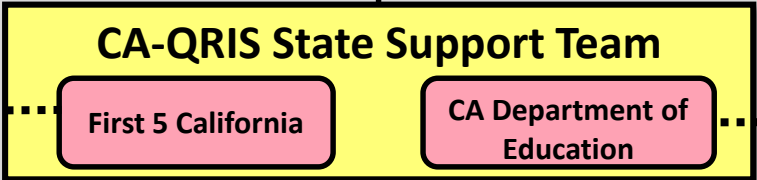
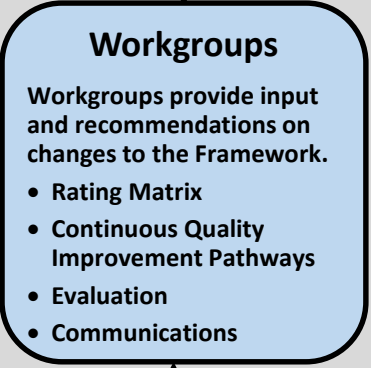
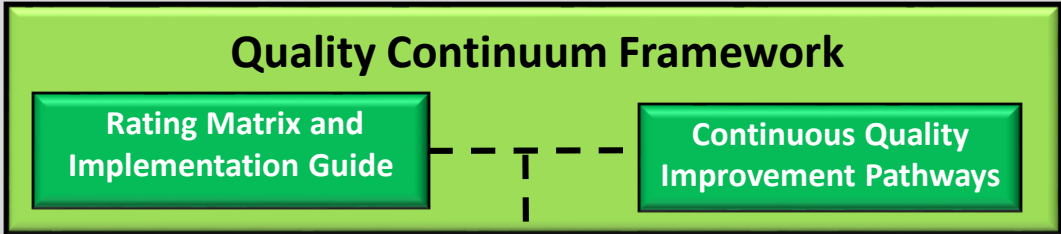
Improve and Maximize Programs so All Children Thrive

**State-Level Systems Support and Statewide T&TA –
approximately \$28 million**

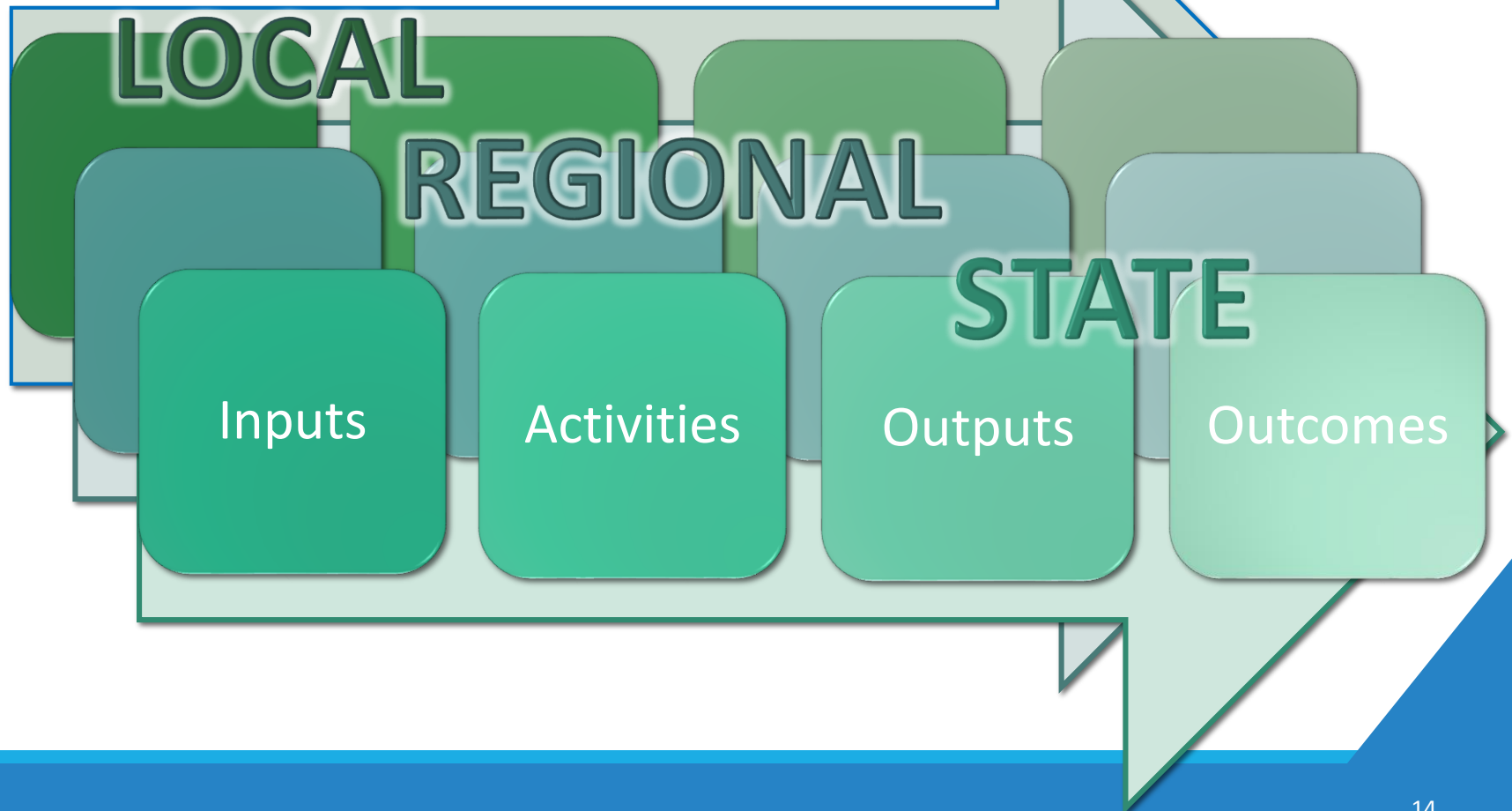
First 5 IMPACT's state-level system supports and statewide T&TA include projects and resources in two major system areas:

1. State, Regional, and Local System Supports
2. Training and Technical Assistance Infrastructure

Quality Counts California



Evaluation Layers



Evaluation Plan – Goals

First 5 IMPACT

Evaluation is intended to:

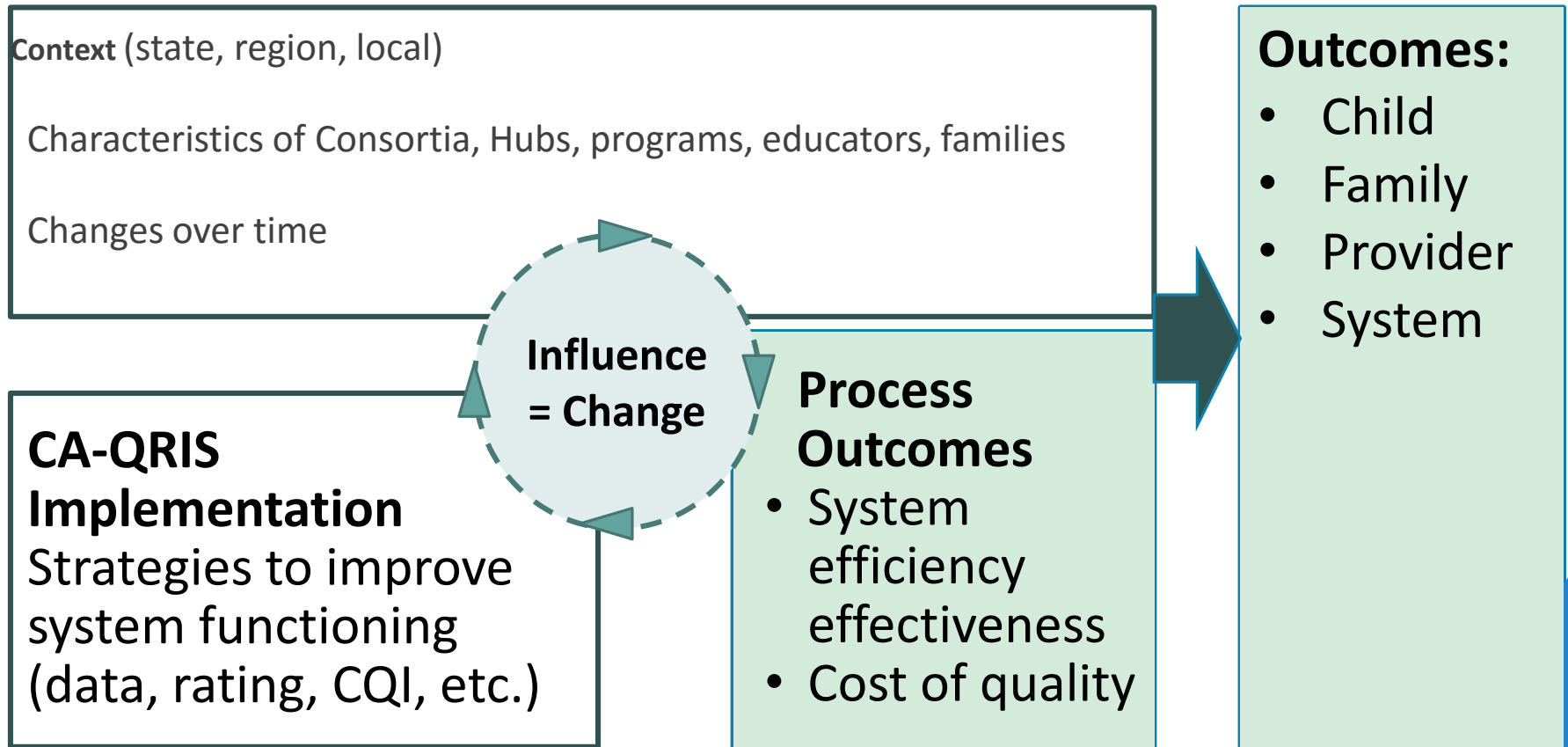
- Provide feedback to support continuous quality improvement of systems work
- Help tell the story of the F5CA investment

Quality Counts CA

Evaluation is intended to:

- Determine conditions under which QRIS improves child and family outcomes
- Understand the cost of quality

Theory of Change for Evaluation Design



First 5 IMPACT Evaluation

CA-QRIS Evaluation
Request For Proposal (RFP)

First 5 IMPACT Evaluation

Evaluation topics (examples):

Context (state, regional, local)

- QRIS framework and investments
- Local and regional partners, and their roles
- Characteristics of programs, educators, and families

Implementation (state, regional, local)

- Quality, fidelity, and coordination (rating, coaching, training)
- Efficiencies and reduced duplication of services
- Participation in statewide T&TA opportunities
- Engagement of alternative settings

Audience:

- First 5 California Commission
- Quality Counts CA Consortium and State Support Team

Quality Counts CA Evaluation

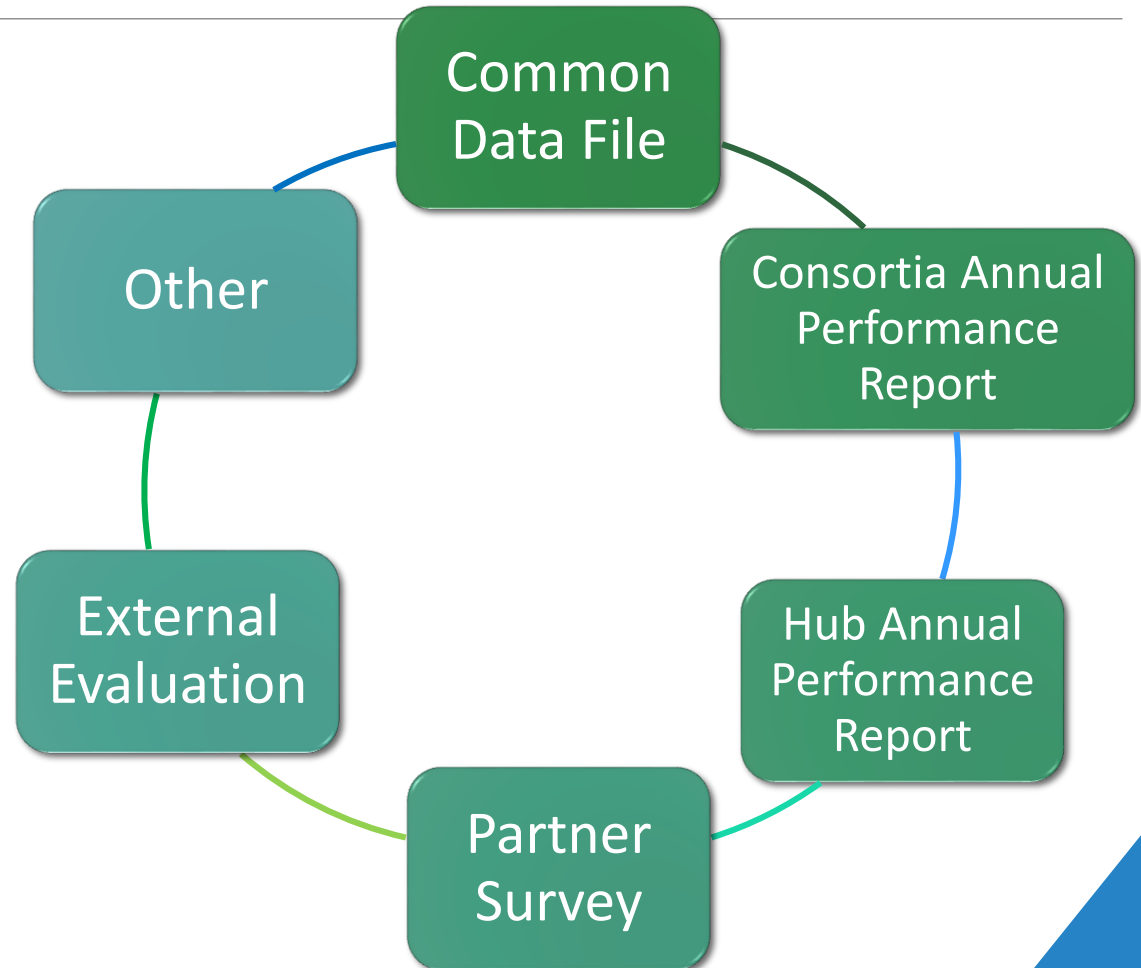
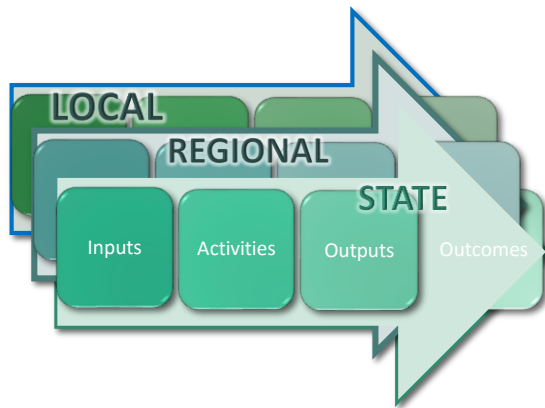
Evaluation topics (examples):

- Rated and non-rated factors that contribute to improved child outcomes
- Cost of improving quality
- Circumstances under which QRIS creates market demand for quality
- How the QRIS and Rating Matrix applies to different types of early childhood settings

Audience:

- Public
- Legislators

Multiple Sources of Data



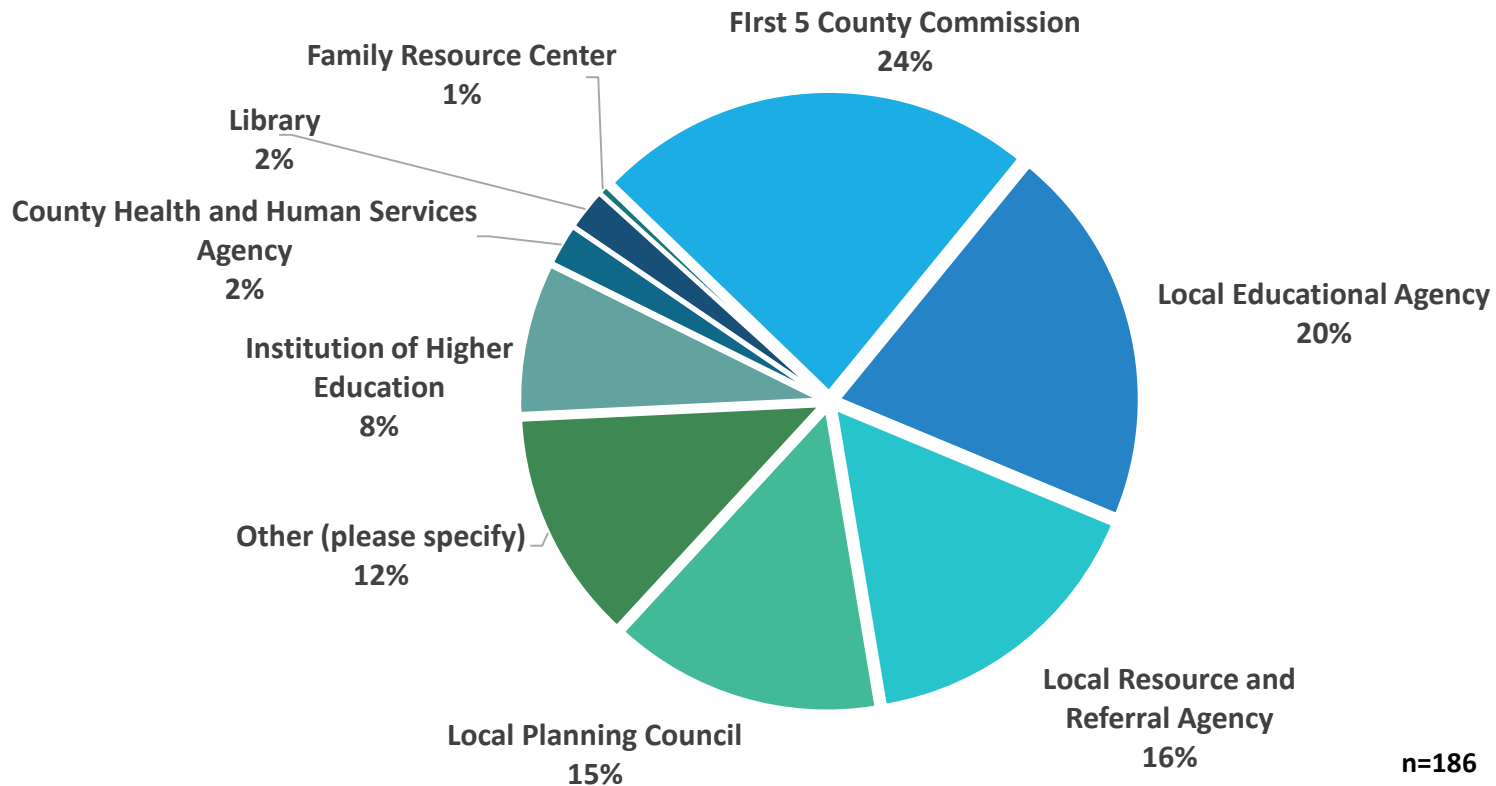
Data Sources for First 5 IMPACT Evaluation

	Consortium APR	Hub APR	Partner Survey	Common Data File	Workforce Registry	Interview Data	State Support Team	Historical documents	Targeted evaluation of state funded projects
1. Context <i>(including changes over time)</i>									
CA QRIS framework, investments, and overall structure							X	X	X
Local and regional QRIS implementation, partners and their roles and relationships in the local/regional system	X	X	X			X			
Characteristics of programs, educators, and families				X	X				
2. Implementation									
State systems to support quality, fidelity, and <u>coordination (rating, coaching, training)</u>							X		X
Local and regional approaches to improve efficiencies and reduce duplication of services	X	X	X		X	X			X

Partner Survey

(Example Respondents FY 2015-16)

Participating Agency Types



Next Steps – Next Presentation



- Summary of statewide participation from the Common Data File
- Survey-specific and triangulated highlights from the Partner Survey, and Hub and Consortia APRs
- Recommendations for further analysis (and method/timeline for sharing)
- Progress on the QRIS Evaluation RFP